

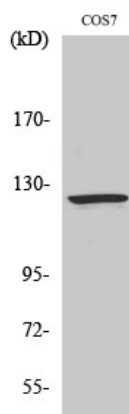


Ran BP-6 Polyclonal Antibody

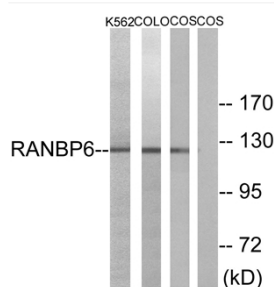
Catalog No	YP-Ab-16223
Isotype	IgG
Reactivity	Human;Mouse;Rat;Monkey
Applications	WB;ELISA;IHC
Gene Name	RANBP6
Protein Name	Ran-binding protein 6
Immunogen	The antiserum was produced against synthesized peptide derived from human RANBP6. AA range:800-849
Specificity	Ran BP-6 Polyclonal Antibody detects endogenous levels of Ran BP-6 protein.
Formulation	Liquid in PBS containing 50% glycerol, 0.5% BSA and 0.02% sodium azide.
Source	Polyclonal, Rabbit,IgG
Purification	The antibody was affinity-purified from rabbit antiserum by affinity-chromatography using epitope-specific immunogen.
Dilution	WB 1:500-2000;IHC-p 1:50-300; ELISA 2000-20000
Concentration	1 mg/ml
Purity	≥90%
Storage Stability	-20°C/1 year
Synonyms	RANBP6; Ran-binding protein 6; RanBP6
Observed Band	125kD
Cell Pathway	Cytoplasm . Nucleus .
Tissue Specificity	Endometrium,Kidney,Placenta,
Function	function:May function in nuclear protein import as nuclear transport receptor.,similarity:Belongs to the importin beta family.,similarity:Contains 7 HEAT repeats.,
Background	function:May function in nuclear protein import as nuclear transport receptor.,similarity:Belongs to the importin beta family.,similarity:Contains 7 HEAT repeats.,
matters needing attention	Avoid repeated freezing and thawing!
Usage suggestions	This product can be used in immunological reaction related experiments. For more information, please consult technical personnel.



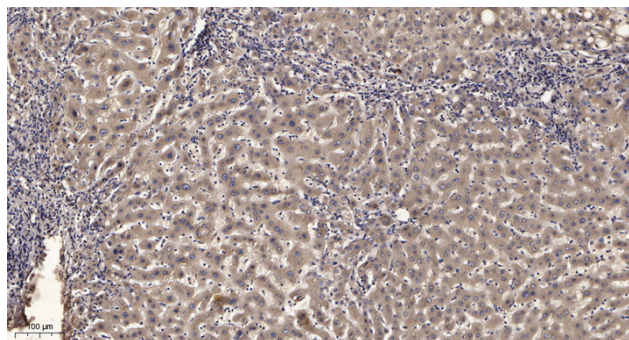
Products Images



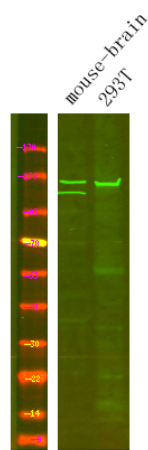
Western Blot analysis of various cells using Ran BP-6 Polyclonal Antibody



Western blot analysis of lysates from COS7, K562, and COLO cells, using RANBP6 Antibody. The lane on the right is blocked with the synthesized peptide.



Immunohistochemical analysis of paraffin-embedded human liver cancer. 1, Antibody was diluted at 1:200(4° overnight). 2, Tris-EDTA,pH9.0 was used for antigen retrieval. 3,Secondary antibody was diluted at 1:200(room temperature, 45min).



Western Blot analysis of Various cells using primary antibody at 1:1000 dilution 4°C, overnight. Secondary antibody(catalog#:RS23920) was diluted at 1:10000 25°C, 1.5hours